

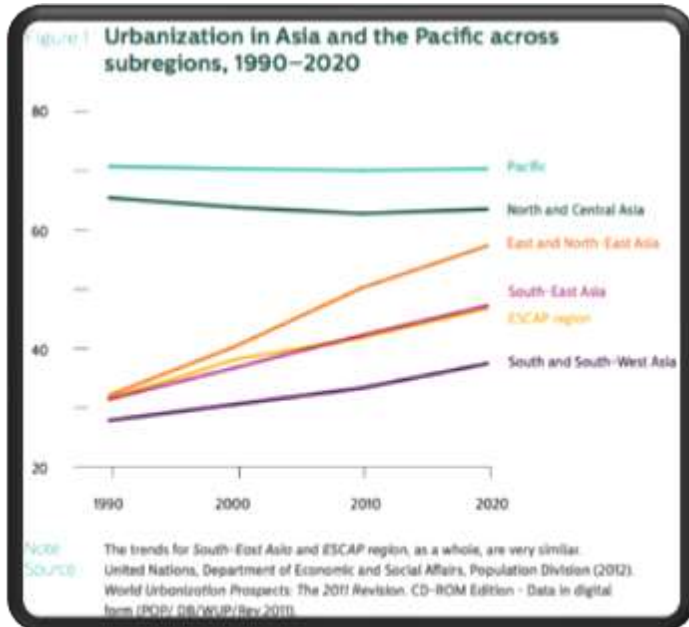


IAIA Special Symposium,  
Resettlement & Livelihoods  
Manila, Philippines, 20-22 February 2017

# LIVELIHOOD RESTORATION IN URBANISING ENVIRONMENTS

**ANGELA REEMAN, REEMAN CONSULTING PTY LTD**

# ASIA AND URBANIZATION



**Table 2.1: Urbanization Trends in Asia, 1950–2030**

	GDP per capita (PPP, \$) 2003	Population (million) 2005	Urban Population (million) 2005	Proportion Urban			Estimated Increase in Urban Population	
				(%) 1950	(%) 2005	(%) 2030	(million) 2005–2030	(%) 2005–2030
World		6,453.6	3,172.0	29	49	61	1,772.7	56
Asia		3,917.5	1,562.1	17	40	55	1,102.2	71
Malaysia	9,512	25.3	16.5	20	65	78	10.8	66
Thailand	7,595	64.1	20.8	17	33	47	14.6	70
PRC	5,003	1,322.3	536.0	13	41	61	341.6	64
Philippines	4,321	82.8	51.8	27	63	76	34.8	67
Sri Lanka	3,778	19.4	4.1	14	21	30	2.4	59
Indonesia	3,361	225.3	107.9	12	48	68	80.0	74
India	2,892	1,096.9	315.3	17	29	41	270.8	86
Viet Nam	2,490	83.6	22.3	12	27	43	24.5	110
Pakistan	2,097	161.2	56.1	18	35	50	79.3	141
Cambodia	2,078	14.8	2.9	10	20	37	5.8	197
Bangladesh	1,770	152.6	38.1	4	25	39	48.4	127
Lao PDR	1,759	5.9	1.3	7	22	38	2.3	177

Source: Asian Development Bank

# OVERVIEW

- With rapid industrialization in Asia has come rapid transition of societies
- Increasingly common to see resettlement programs move communities from rural to semi-urban or urban environments
- Urban environments can present great livelihood improvement opportunities for displaced people
- But, livelihood models typically assume either a rural or urban context
- New/improved/diversified models are needed for communities in transition

# LIVELIHOODS IN TRANSITION: SOME OPPORTUNITIES

- More abundant employment options (e.g., good for youth)
- Larger market for small and medium enterprises
- Greater training and skills development opportunities
- Better transport links and mobility
- Higher wages, sometimes, but not always



# .....AND SOME RISKS

- Job markets can be very competitive in urban Asia
- Communities in urban-rural fringe areas often have lower skills
- It is difficult to transition from subsistence to other, often more formal, livelihood activities
- Vulnerable people and other cohorts are most challenging to assist
- Some national legislation/ practices encourage 'cashing out' of livelihood restoration



# EMPLOYMENT AND LIVELIHOODS

- Urban resettlement commonly relies on “jobs” to address economic displacement impacts
- Overstating local content prospects remains common
- Most developments intend to maximize local jobs
- But, defining “local” is often problematic
- And, giving preference to economically displaced people does not happen on its own
- Barriers to employment are also commonly underestimated, e.g., skills, job-readiness, etc



# EXAMPLE 1 – REAL EMPLOYMENT OPPORTUNITIES - MYANMAR

- Industrial zone on edge of major city
- Land acquisition and resettlement in stages
- Several thousand construction workers for stage 1
- Preference given to displaced families for training and job-matching
- But, most are casual labourers or farmers who have found it difficult to transition and require further support



# EXAMPLE 1 – MYANMAR CONTINUED

- There are good intentions to maximize local employment, but this is relatively new in Myanmar
- Intense NGO and external scrutiny has also influenced displaced people's expectations
- Forecasting jobs has been challenging with many contractors and factories involved
- Local authorities are engaged in recruitment process, but it is new and they have limited experience and resources
- Strong monitoring of displaced people has helped to assess if livelihood restoration is being achieved



# TRAINING AND JOB-MATCHING

- Sometimes training and/or job-matching alone will be enough – but not often
- Job-readiness training and mentoring are important but not readily provided
- Often barriers to training need to be removed, e.g., transport fees, daily allowances, etc
- How much is enough support for displaced people to obtain and maintain jobs (e.g., subsidies, materials, agreements...)?

*“We gave them training and a job offer but they didn’t take it or they didn’t stay”.....*



# EXAMPLE 2 – URBAN LIVING VS. SUBSISTENCE LIVELIHOODS - VIETNAM



- Major industrial facility in rapidly urbanising area
- Rural to urban resettlement and numerous surrounding resettlements
- Many resettled families chose not to build replacement house
- Some are using plots for livelihood activities (e.g., garden cultivation) or are selling them



- Extended families have reintegrated / cohabited
- Some cohorts face particular difficulties in gaining employment, e.g., over 40's

# EXAMPLE 2 – VIETNAM CONTINUED

- Maximising Local Content

**Strong Local Recruitment:**

- Strong local recruitment policies and requirements for sub-contractors
- Support to sub-contractors



**Job-seeker registration and support:**

- All interested resettlement-affected job seekers were registered
- Main recruitment office and branch offices; plus dedicated staff

**Recruitment Campaigns:**

- Widespread job advertisement campaigns
- No informal hiring





# WHAT ABOUT SMALL TO MEDIUM BUSINESSES?



# SMALL SCALE BUSINESSES

- Important livelihood activity for most families in urbanising areas
- Some businesses can be readily resettled, but not all
- What about impacts to informal or non-registered businesses?



# SUCCESSFUL SMALL SCALE BUSINESS DEVELOPMENT

## MARKET DRIVEN

- Market assessment
- Business plans



## TRAINING

- Technical/vocational
- Community-based
- Transport & daily allowances



## ACCESS TO CREDIT

- Small-scale loans
- Institutional or community microfinance

## CAPITAL INVESTMENT

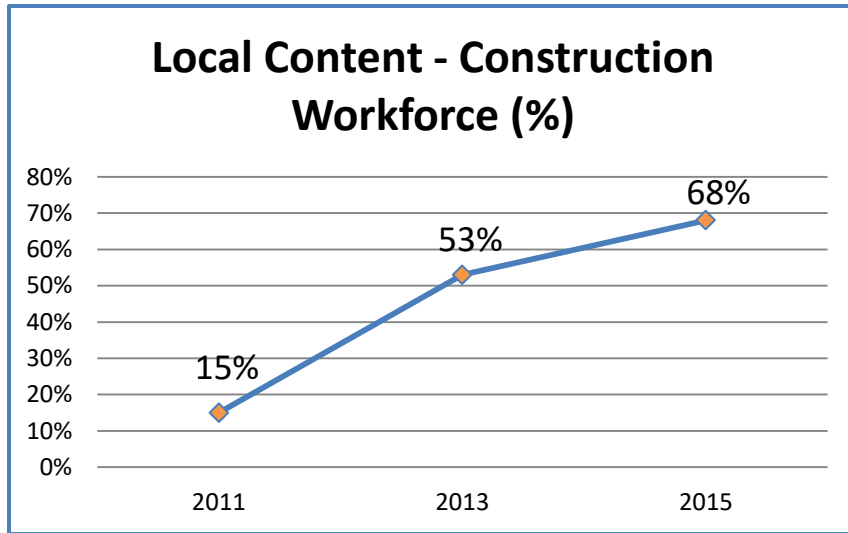
- Capital investment
- Materials, equipment

## MONITORING & OTHER SUPPORT

- Ongoing tech. advice
- Refresher training
- Regular expert visits




# EXAMPLE 3 – IMPORTANCE OF LOCAL CONTENT - INDONESIA



Unrest / Demonstrations	2013	2014	2015
1 Public Road Blockage	37	13	0
2 Access to Site (trespass, gate blockage)	4	2	0
Total	41	15	0



Main Issues	2013	2014	2015
1 Local Recruitment	11	3	0
2 Industrial Relations	12	2	0
3 Road Repair / Dust	9	3	0
4 Patrol Road	2	0	0
5 Land Acquisition for Road	5	5	0
6 Local Business	2	2	0
Total	41	15	0

 Out of 35 potential demo/road blockages

# EXAMPLE 3 – INDONESIA CONTINUED

- Collaborated closely with local Manpower Offices to improve local recruitment
- Although good outcomes were eventually achieved, construction is temporary
- Many young people out of work after construction
- Significant ramp up of small business development programs was only way to avoid re-escalation of social unrest and restore livelihoods

# EXAMPLE 3 – INDONESIA CONTINUED



Welding Vocational Training & Certification



Electricity Vocational Training



Sewing Vocational Training



Furniture Vocational Training

# KEY FINDINGS (1)

- Displaced people in rapidly urbanising areas find it difficult to change livelihoods
- Jobs for displaced communities do not occur without considerable effort and resources
- Training alone is usually not enough to achieve livelihood restoration for most people



# KEY FINDINGS (2)

- Adequate food security measures not often in urban livelihood restoration programs
- Some cohorts are particularly vulnerable; including those not typically vulnerable
- “Cashing out” of livelihood restoration is common, but does nothing to restore livelihoods



# RECOMMENDATIONS FOR GOOD PRACTICE

- Strong job-seeker registration, recruitment & support policies and procedures
- Collaboration with local authorities to ensure preference for “locals” and streamline recruitment
- Job-readiness training and mentoring for workers
- Multi-faceted livelihood restoration programs - jobs, small business, access to credit.....
- Holistic small business development
- Avoid “cash out” of livelihood restoration
- Adequately funded LRP's....



# THANK YOU!

